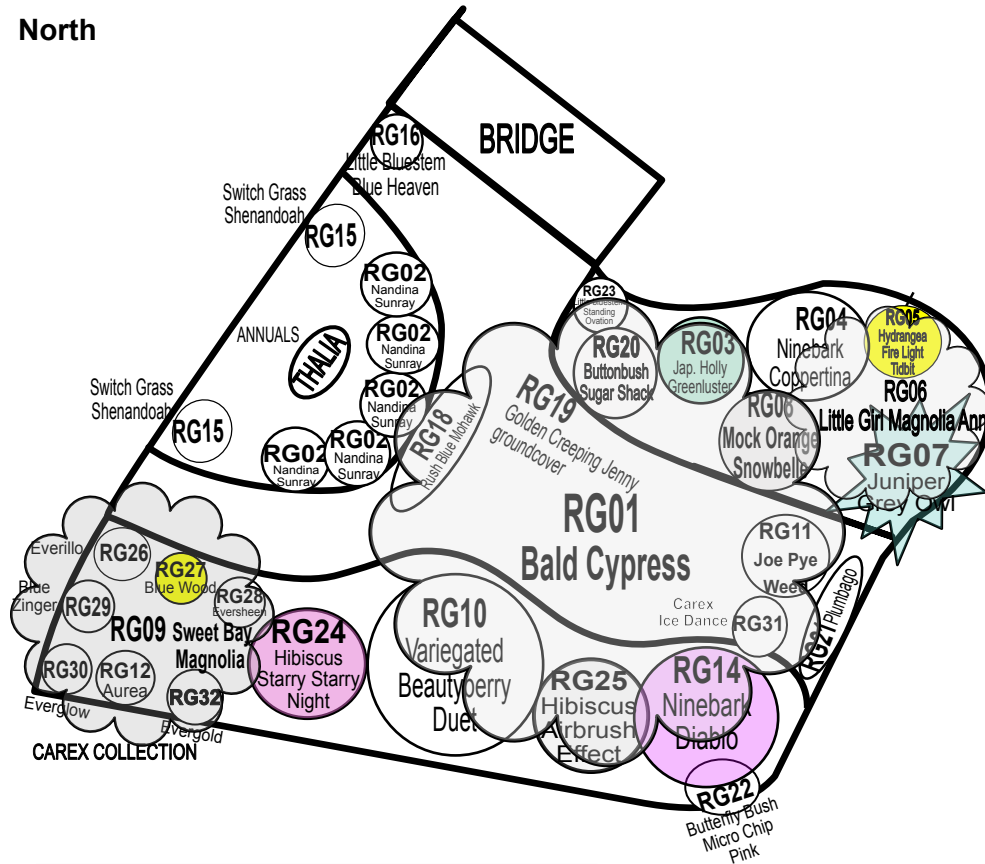


Johnson County Extension Garden Gallery Section Rain Garden

RG

← North



- RG01 - Taxodium - Bald Cypress
- RG02 - Nandina 'Sunray' - Heavenly Bamboo
- RG03 - Ilex crenata 'Green Luster' - Japanese Holly
- RG04 - Physocarpus 'Coppertina' - Ninebark
- RG05 - Hydrangea 'Fire Light Tidbit' - Panicle Hydrangea
- RG06 - Magnolia 'Ann' - Little Girl Magnolia
- RG07 - Juniperus v. 'Grey Owl' - Spreading Juniper
- RG08 - Philadelphus 'Snowbelle' - Dwarf Mock Orange
- RG09 - Magnolia virginiana - Sweet Bay Magnolia
- RG10 - Callicarpa 'Duet' - Variegated Beautyberry
- RG11 - Eupatorium 'Baby Joe' - Dwarf Joe-Pye Weed
- RG12 - Carex elata 'Aurea' - Bowles' Golden Sedge
- RG13 -
- RG14 - Physocarpus 'Diablo' - Ninebark
- RG15 - Panicum 'Shenandoah' - Switch Grass
- RG16 - Schizachyrium 'Blue Heaven' - Little Bluestem
- RG17 -
- RG18 - Juncus 'Blue Mohawk' - Rush
- RG19 - Lysimachia 'Aurea' - Golden Creeping Jenny
- RG20 - Cephalanthus 'Sugar Shack' - Buttonbush
- RG21 - Ceratostigma plumbaginoides - Plumbago
- RG22 - Buddleia Micro Chip 'Pink' - Butterfly Bush
- RG23 - Schizachyrium 'Standing Ovation' - Little Bluestem
- RG24 - Hibiscus 'Starry Starry Night' - Hardy Hibiscus
- RG25 - Hibiscus 'Airbrush Effect' - Hardy Hibiscus
- RG26 - Carex oshimensis EverColor 'Everillo' - Sedge
- RG27 - Carex flaccosperma - Blue Wood Sedge
- RG28 - Carex oshimensis EverColor 'Eversheen' - Sedge
- RG29 - Carex flacca 'Blue Zinger' - Blue Sedge
- RG30 - Carex morrowii EverColor 'Everglow' - Sedge
- RG31 - Carex morrowii 'Ice Dance' - Sedge
- RG32 - Carex oshimensis 'Evergold' - Sedge

