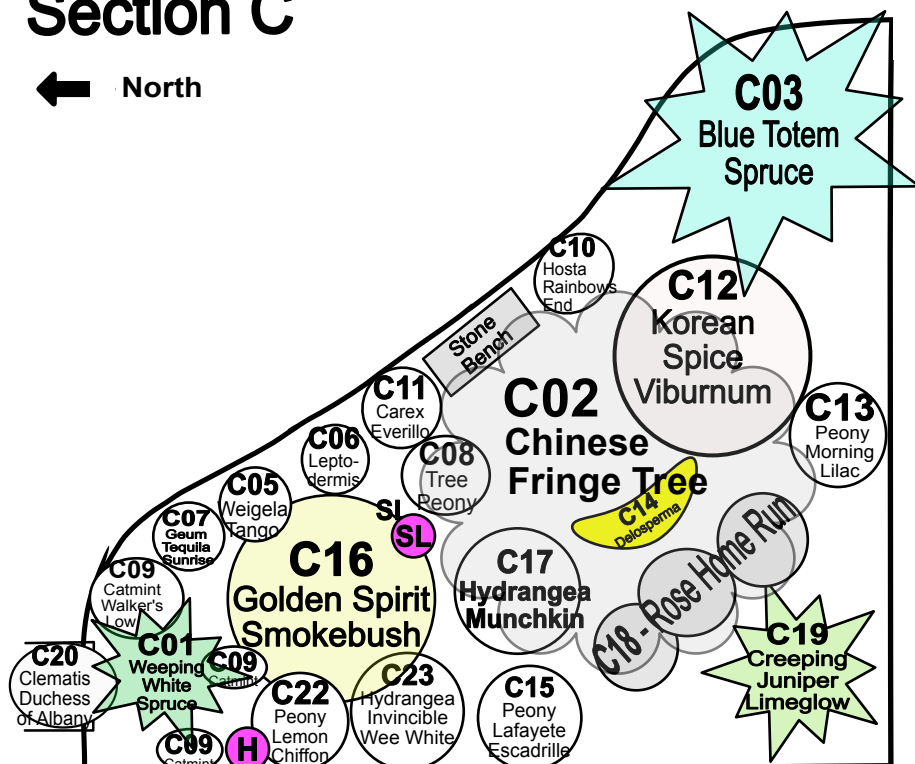


# Johnson County Extension Garden Gallery Section C

# C

← North



**SL** = Surprise Lilies

**H** = Hyacinth

- C01 - Picea 'Pendula' - Weeping White Spruce
- C02 - Chionanthus retusus - Chinese Fringe Tree
- C03 - Picea pungens 'Blue Totem' - Colorado Spruce
- C04 -
- C05 - Weigela 'Tango'
- C06 - Leptodermis oblonga - Baby Lilac
- C07 - Geum Cocktail 'Tequila Sunrise' - Avens
- C08 - Paeonia s. 'Gauguin' - Tree Peony
- C09 - Nepeta 'Walker's Low' - Catmint
- C10 - Hosta 'Rainbow's End'
- C11 - Carex oshimensis 'Everillo' - Sedge
- C12 - Viburnum 'Korean Spice' - Fragrant Viburnum
- C13 - Paeonia 'Morning Lilac' - Intersectional Peony
- C14 - Delosperma - Ice Plant - Variety TBD
- C15 - Paeonia Itoh 'Lafayette Escadrille' - Itoh Peony
- C16 - Cotinus 'Golden Spirit' - Golden Smoketree
- C17 - Hydrangea 'Munchkin' - Oakleaf Hydrangea
- C18 - Rosa 'Home Run' - Shrub Rose
- C19 - Juniperus horizontalis 'Limeglow' - Creeping Juniper
- C20 - Clematis 'Duchess of Albany'
- C21 -
- C22 - Paeonia 'Lemon Chiffon' - Herbaceous Peony
- C23 - Hydrangea 'Invincibelle Wee White' - Smooth Hydrangea

