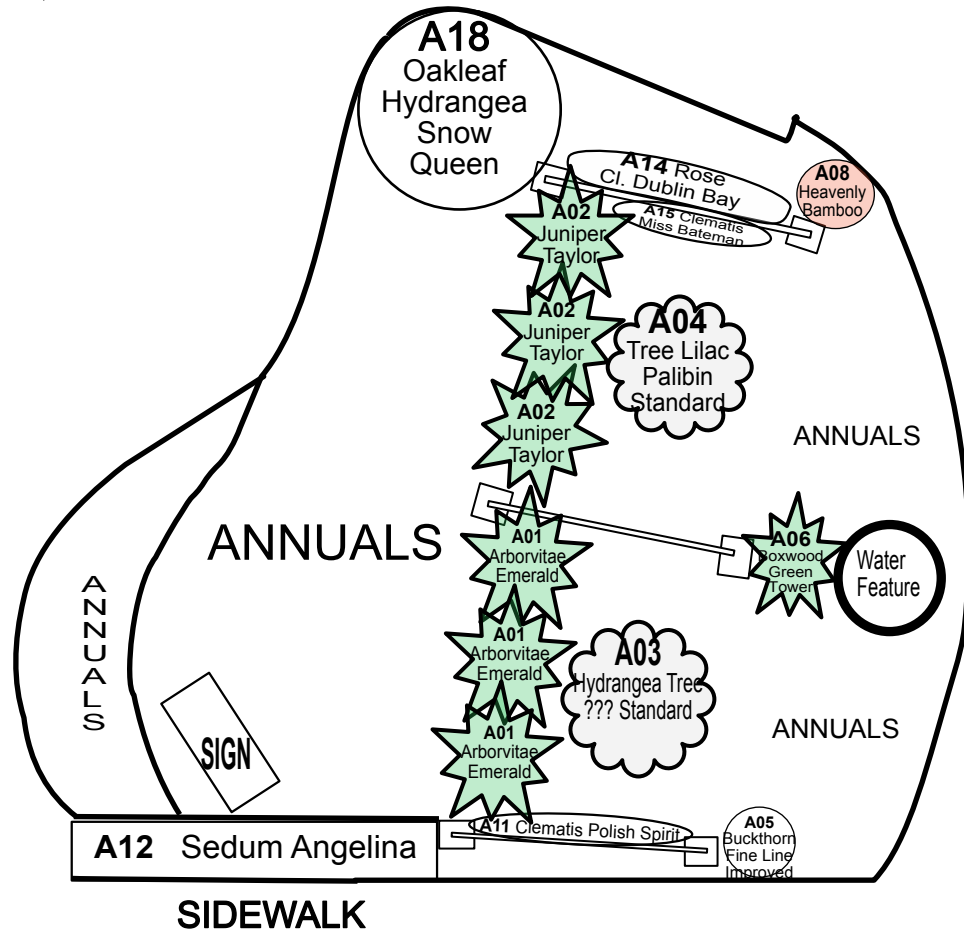


# Johnson County Extension Garden Gallery Section A

# A



- A01 - Thuja occidentalis 'Emerald' - Eastern Arborvitae
- A02 - Juniperus virginiana 'Taylor' - Eastern Redcedar
- A03 - Hydrangea paniculata 'Grandiflora' Standard - Hydrangea Tree
- A04 - Syringa 'Palibin' Standard - Tree Lilac
- A05 - Rhamnus 'Fine Line' Improved - Willow-leaf Buckthorn
- A06 - Buxus sempervirens 'Green Tower' - Boxwood
- A07 -
- A08 - Nandina domestica - Heavenly Bamboo
- A09 -
- A10 -
- A11 - Clematis 'Polish Spirit'
- A12 - Sedum rupestre 'Angelina' - Stonecrop
- A13 -
- A14 - Rosa 'Cl. Dublin Bay' - Climbing Rose
- A15 - Clematis 'Miss Bateman'
- A16 -
- A17 -
- A18 - Hydrangea quercifolia 'Snow Queen' - Oakleaf Hydrangea

