



Clover Clips

A newsletter for Johnson County 4-H families.

January 2015 Issue

Page 1

- * 4HOnline Enrollment
- * New Family Orientation

Page 2

- * Countywide Photography Project
- * Dog Club Spring Training Info.
- * Countywide Rabbit Project
- * Horseless Horse Project Clarifications

Page 3

- * NE Leadership Event
- * Volunteer Orientations
- * County Club Day

Page 4

- * Jr. Leaders Info.
- * 2015 Food Fare
- * Beekeeping SPIN Club
- * Council Info.
- * Project Resources

Page 5

- * Horse Panorama
- * Dog Judges' Training
- * Festival of Breads Contest
- * Citizenship in Action

Page 6

- * Ks. 4-H Scholarships
- * Exchange Hosting Opportunities
- * State Horticulture Judging Contest

Page 7

- * 4-H Foster Children Grants
- * Citizenship Washington Focus
- * Save these dates...

Page 8

- * Jan./Feb. Calendar

Leader Update

Page 9

- * Upcoming Meetings
- * Club Reminders
- * Requirements for Club Volunteers

Page 10

- * Volunteer Orientations

4-H Families,

"A person who never made a mistake never tried anything new."
--Albert Einstein

Happy 2015! 4-H is all about trying new things and experiencing failures with our successes. Here is wishing all of us a few mistakes along with an abundance of accomplishments in our 4-H projects, work, school, and family. -Tara

Enrollment Status in 4HOnline

An email was sent out December 23, to all 4-H families that had a family member or members whose enrollment status is Incomplete. This means that an initial online enrollment was submitted through 4HOnline, but there are some details of the enrollment that need to be added or edited.

The 4HOnline system should have sent an email to the family account's email address. The email would be from 4HOnline and have the subject heading "*Kansas 4-H - Additional Enrollment Information Required!*" At the **very bottom** of this email is a paragraph that states what needs to be added or edited. It is easy to miss, so read carefully!

All you have to do is log in to your family's account, click "Edit" next to the family member's name whose enrollment status is incomplete, add or edit the items listed in the email, and then resubmit the enrollment. (Note: Do not create a new profile.)

If you cannot locate this email, are having trouble making additions/ edits, or are unsure of a member's status, please contact Christin. With an incomplete enrollment status Johnson County 4-H is not able to send the family member any regular communications, so don't delay in completing the process!

NEW TIME!!! New 4-H Family Orientation

We will be offering a New Family Orientation, February 8, 2015, from **1-2:30 p.m.** at the Extension office for all 1st and 2nd year 4-H families. To register please complete the information at <http://goo.gl/forms/WrLub1ITg2>. The link is also posted on the Johnson County 4-H website at www.johnson.ksu.edu/4Hforms. As new families join our 4-H program, welcome them with open arms AND information. If they, or anyone else you know of, are not receiving the monthly newsletter, please direct them to the Johnson County 4-H website or our office. Thank you for your help in this area as we begin our new 4-H year and the online enrollment process.

County Project Opportunities

Countywide Photography Project Upcoming Meetings

Plaza Photo Shoot - Saturday, January 10, 2015, 3 p.m. Meet at Antioch Library parking lot (corner of Antioch Rd. and Shawnee Mission Parkway). We will go over nighttime photography and then walk around The Plaza. The holiday lights will still be on. Bring your camera and tripod if you have one and dress for the weather. It often becomes much colder when the sun goes down.

Photo Scavenger Hunt - We will be meeting on February 7, at 2:30 p.m. at the Food Court at the Mall of the Great Plains on 151st Street in Olathe. Bring your camera and tripod if you have one. We will split into teams and learn different photographic/lighting techniques by doing them. Then we will meet at the Food Court and view each other's photos afterwards. Parents, please stay with your children if possible.

Looking Ahead - No meeting in March due to Club Day and Spring Break. We will be touring a professional portrait studio April 4. More details in next month's Clover Clips.

Email questions to the Ladd Family at theladds5@gmail.com.

Dog Club Spring Training Enrollment Information

When: Thursday evenings, February 14 - April 30, 2015

February 14 - Mandatory Orientation meeting (no dogs at this meeting)

Sunday, February 8, at Noon - Mandatory agility workshop for all agility participants

Where: Green Building, Johnson County Fairgrounds

To enroll, return the registration form, fees, proof of vaccination, and parent volunteer form to Tammy Locke by January 13, 2015. Please make checks payable to: Johnson County 4H Dog Club. The forms can be found on the Johnson County 4-H website at www.johnson.ksu.edu/4Hlivestock. You may mail or email the forms to Tammy at 32654 W. 171st Court, Gardner, KS 66030 or Tammy.Locke@Unilever.com. If you have any questions feel free to email or call Tammy (913-206-7079).

Countywide Rabbit Project 2015 Meeting Dates and Locations

February 9, March 5, and April 9 - Open Class Building, Johnson County Fairgrounds

June 2 - Green Building, Johnson County Fairgrounds

All meetings are from 6:30-8 p.m. (Watch upcoming issues of Clover Clips for meeting topics.)

Questions? Contact Susan Rogers at 913-226-6167, srcgateway2000@gmail.com or Maribeth Finley at 913-208-3921, finleyfarms@embarqmail.com.

4-H Horseless Horse Project Clarifications

The State 4-H office has had questions concerning the Horseless Horse project, below are some clarifications based on learning and risk management.

4-H Horseless Horse

- 4-H member does not own or lease a horse.
- Project intended to offer a 4-H member opportunity to learn about horses.
- 4-H member may participate in judging contests, quiz bowl, hippology and give presentations.
- 4-H member may volunteer to assist another 4-H member at horse shows and trail rides.
- Project member may exhibit at local fair with a borrowed 4-H Identified horse in the showmanship class only. No riding.

Local Opportunities

Northeast 4-H Leadership Event

What: The Northeast Area 4-H Leadership Event is designed for future and present day leaders! This is open to youth ages 12-18 years old as well as volunteers/adults. This is an event that will help to create leadership skills with class leaders from all over the state of Kansas.

When: January 31, 2015, 9 a.m.-4:30 p.m. in Manhattan, Ks. Registration closes January 15. The cost of the event is \$25 which includes workshops, lunch, and a snack. To register go to www.Kansas4-H.org and click on "4-H Event Registration."

Why: If you are looking for a one day leadership experience with new friends, leadership skills, and great ideas to take back to your clubs then you should attend!

The Northeast 4-H Leadership Event is put on by the Northeast Area Representatives from the Kansas 4-H Youth Leadership Council.

Volunteer Orientations for the Volunteer Screening Process

Are you a leader in your club? Are you leading 4-H youth through project work? Then you need to complete the Kansas 4-H Volunteer Screening Process and become a Registered Volunteer. This process is designed to keep you safe as well as the 4-H'er. One part of the process is the orientation. You can either do this online or attend an in-person orientation. In-person orientations will be held at the Extension office.

Dates: January 14, 2015 – 7-8:30 p.m.
January 29, 2015 – 6:30-8 p.m.
February 24, 2015 – 7-8:30 p.m.

To register, complete the form at <http://goo.gl/forms/qMppKYt0Hq>.

Still have questions about becoming a Registered 4-H Volunteer? Please call the office or visit www.johnson.ksu.edu/4Hvolunteer for more details.

2015 Johnson County 4-H Club Day

Johnson County's 4-H Club Day is scheduled for Saturday, March 7, at Wheatridge Middle School in Gardner. Club Day is an opportunity for 4-H'ers to showcase their acting, dancing, public speaking, demonstration, parliamentary procedure and musical skills. Registration and payment links and the guidelines are posted at www.johnson.ksu.edu/4Hclubday. For club group events please have only ONE person from your club complete registration.

Club Day Timeline: February 6: Registration and payment due
February 16-20: Sign up for specific time slots
February 25: First draft of schedule posted
February 27: Final draft of schedule posted

New This Year!!!

Order Johnson County 4-H T-shirts Online and Pick Them Up at Club Day!

We have created an online form for 4-H families to place an order for Johnson County 4-H t-shirts. Orders that are placed by Wednesday, March 4, can be paid for and picked up during Club Day on March 7. The link to the order form is on the Club Day webpage at www.johnson.ksu.edu/4Hcouncil.

There is also a PayPal link on this page to pay for your order using a credit card. The cost per shirt is \$10. There are youth sizes small to XL and adult sizes small to XL and 3XL.



Local Opportunities

Countywide Junior Leaders

Next meeting: Thursday, January 15, at 6:30 p.m. at the Extension office

Who is eligible? Any 4-H'er between the ages of 12-18 who is interested in expanding their leadership opportunities and further developing their leadership skills in a fun environment with other 4-H'ers from across the county!

New meeting date and time: 3rd Thursday of every month at 6:30 p.m. at the Extension office. Please also visit the Johnson County 4-H website at www.johnson.ksu.edu/4Hjuniorleaders for information about the summer 2016 Citizen Washington Focus delegation trip.

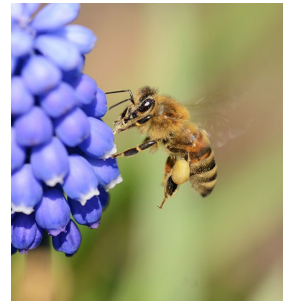
What is Your Favorite Restaurant Dish?

The 11th annual Food Fare will take place on February 7. This year's theme is Restaurant Copycats! You can enjoy this event in two different ways: you can join your club if they choose to do a booth and help cook one of your favorite restaurant copycat dishes; or you can come and participate by visiting all the booths and enjoying the different dishes that the 4-H clubs have prepared. If you plan to attend either with your club booth or on your own, please register so we can let clubs know how much food to prepare. We will also email you details when it gets closer to the event. Register at <http://goo.gl/forms/cRK4gZrzD0>. This event is FREE to attend, however we are asking those that attend to bring non-perishable food items to donate to Johnson County families in need.

New Special Interest (SPIN) Club this spring...

Johnson County 4-H Beekeeping SPIN Club coming soon! This project will help youth learn about the importance of bees to our agriculture and how to raise domestic bees. Areas of study will be the types of bees, the honey and wax they produce, the plants that attract bees, and the equipment a beekeeper needs. Participants will learn basic beehive care, as well as how to extract and bottle honey.

Enrollment will be available at the beginning of February. Space is limited to the first 20 participants, so watch for enrollment information. The SPIN club will start meeting mid-March.



County Council Information

Each club needs to have 2 youth and 2 adults serve as the club's representatives to 4-H County Council. The meetings occur at 7 p.m. on the 1st Monday of odd months at the Extension office. Council officers will have meetings which occur at 7 p.m. on the 1st Monday of even months at the Extension office.

If you have any questions please contact Tara.

Project Resources Available

There are a variety of project resource books in the office available to purchase. They typically cost less than \$5 and have a lot of activities and lessons about each specific project. They are also usually broken down to match the skill or age level of the 4-H'er. Stop by the office to take a look at the materials or call or email Christin for more information.

State Opportunities

Horse Panorama

The 2015 Horse Panorama is January 23-25, at Rock Springs 4-H Center. Paper registration applications and payment are due to the Extension office by 5 p.m. on January 12. Because of the short time between the registration due date and event date, no late applications will be accepted. For the application or more information visit <http://www.kansas4-h.org/p.aspx?tabid=425>, scroll down to the "Horse Panorama" heading.

Kansas 4-H Dog Judges' Certification Training Details

The Kansas 4-H Dog Judges' Certification training will be held January 30 – February 1, 2015, in Kinsley, Ks., at the Edwards County Fair Building. Beginning the training on Friday evening allows for covering all four phases of the Dog Care and Training Project in one weekend. This is also a good opportunity for local project leaders and older 4-H members to observe the training and better understand how they will be judged at invitational and the Kansas State Fair 4-H Dog Show. For more details about the training or to register, visit <http://www.kansas4-h.org/p.aspx?tabid=426>. Registration is due January 15, 2015.

National Festival of Breads Contest Looking for Youth Entries

Kansas Wheat Commission is hosting the National Festival of Breads contest and, for the second time, is featuring a youth division! One youth grand prize winner will be selected and will receive a \$300 scholarship. Two youth entries will receive a runner-up prize of a \$100 scholarship. More prize packages are detailed in the official contest rules at nationalfestivalofbreads.com.

4-H members or youth entering the contest need to submit their entries by January 16. The entries are now accepted online at nationalfestivalofbreads.com. The recipe should be an original one created by the entrant, which means lots of delicious taste testing for 4-H'ers and their families! The entry should also have a full color photo of their bread attached.

Tips on how to rise to the top of the competition can also be found on the National Festival of Breads website. The most important of these is to follow the rules. It won't matter how tasty your bread is if the rules aren't followed. This contest is for yeast breads and quick breads only. So, save your cake, cookie, pudding or other tasty treats for sharing with your friends and family. Also, make sure to use King Arthur Flour and Red Star Yeast.

The National Festival of Breads will be held in Manhattan on June 13, 2015, at the Hilton Garden Inn. The event is open to the public and features a variety of unique activities for 4-H'ers and their families to enjoy: baking demonstrations, taste tests, a trade show and preparation of the finalists' entries for the contest.

For more information on how to enter the contest, information on the festival, recipes for county fairs and much more, please visit nationalfestivalofbreads.com.

Citizenship in Action

Citizenship in Action (CIA), will be February 15-16, in Topeka. Any youth 13-18 years old before January 1, 2015 is able to attend. Prior 4-H membership is *not* required to attend. CIA is an opportunity for youth to learn about the legislative process and for legislators to see the positive impacts of 4-H. Delegates should be prepared to discuss issues and topics when they meet with their senators and representatives. Registration is \$165 and due January 15. \$100 scholarships are available again this year. To find the scholarship application, register for CIA, or for more information visit <http://www.kansas4-h.org/p.aspx?tabid=420>.

State Opportunities

2015 Kansas 4-H Scholarships

The 2015 Kansas 4-H Scholarship form-fillable (Word) application can be found at www.kansas4-h.org/p.aspx?tabid=479. There is also a link on the Johnson County 4-H website at www.johnson.ksu.edu/4Hforms. 4-H members wanting to apply must submit completed applications to the **Extension office by Monday, January 26, 2015**. Scholarship selection is based on 4-H merit: 40% on 4-H leadership; 30% on 4-H citizenship/community service in 4-H; 20% on 4-H participation and recognition; and 10% on non-4-H participation, leadership, community service, participation, and recognition in school and community. Graduating 4-H seniors and college 4-H students/alumni are encouraged to apply. Johnson County has been fortunate in the past few years to have 4-H'ers receive one of the limited, distinguished 4-H scholarships.

International Exchange Hosting Opportunities

1) Hosting teens 15-18 from Argentina and Norway for one month through States' 4-H International Exchange Programs will be an option in 2015 for families with teens. These exchanges require a host sibling that is the same gender as, and within two years of, the age of their exchangee. Applications for hosting through States' 4-H are completed online.

2) Under the IFYE Exchange, incoming exchangees come from a number of countries including many in Europe and Asia. These exchangees stay with several families, 2-3 weeks each, during summer and fall. There are no host sibling requirements, and many families with younger children have hosted successfully. Farm hosts are always needed. Most IFYEs will be over 19, but a few countries now send exchangees who are younger. Any family applying for States' 4-H hosting may be considered to host an IFYE if no States' 4-H match is available.

3) Any family interested in hosting a Japanese or Korean student for the school year through 4-H may apply now to get to choose from a larger pool. Student applications will be available around February 1. Approved families may request country, gender, as well as interests and hobbies before the pool is opened up nationally. These students stay with one family from August until June.

A link to more information about hosting and the applications is on the Kansas 4-H website at www.kansas4-H.org, under "What's Hot."

2015 State Horticulture Judging Contest Information

The State 4-H Horticulture Judging Contest will be held Saturday, August 22, 2015, on the campus of Kansas State University. The study material for the years 2015 and 2016 is taken from **The Kansas Garden Guide**, KSRE publication S-51 (Rev.) March 2010. This publication is available for purchase at the Extension office or can be downloaded at <http://www.ksre.ksu.edu/bookstore/pubs/s51.pdf>. The written exam selections from **The Kansas Garden Guide** include pages 5-23 (Introduction, Planning a Garden, Composting, Soil Improvement, Seeding and Planting) and pages 71-74 (Herbs). Be sure to use the 2010 version of the garden guide. This information will be available on the Kansas 4-H website on the Horticulture Judging Contest page at <http://www.kansas4-h.org/p.aspx?tabid=442>. Effective January 1, 2015, contestants who have judged as an official team member at the National Junior Horticulture Association Judging Contest are not eligible to compete as a team or as an individual at the State Kansas 4-H Horticulture Judging Contest.

State Opportunities

Grants Available for Foster Children

The purpose of the Kansas 4-H Resource Family Project and Camp Grant Programs is to provide financial assistance for foster youth and their resource families who want to participate in learning opportunities available through 4-H. Through the Kansas 4-H Foundation, \$5,000 in grant funds is available to support foster care families and the children in their care who are current or potential 4-H members. Grant applications are due May 1.

Family Project Grants

- 1) Children must enroll as 4-H members through their local extension office.
- 2) Eligible 4-H member can only apply for one 4-H project and one 4-H camp grant per year.
- 3) Grant funds are for the purpose of starting or enhancing a 4-H project during the 4-H year such as purchasing a camera, craft supplies, clothing, feed, equipment, etc.
- 4) Eligible 4-H member may request funds for supplies and equipment needed for participating in a pet or livestock project; however, funds are not available for the purchase of pets or livestock.
- 5) Grant funding cannot include meal expenses.
- 6) Items and supplies purchased from grant funding for 4-H project become the property of the eligible 4-H member.
- 7) Liability, maintenance and warranty of the items and supplies purchased become the responsibility of the eligible 4-H member.
- 8) Grant application and instructions available on the Kansas 4-H website <http://www.kansas4-h.org/p.aspx?tabid=434>.

National/International Opportunities

Citizenship Washington Focus 2015

The 2015 Citizenship Washington Focus is June 11-22, 2015. Road trip across the USA stopping to see Philadelphia, Gettysburg, the Liberty Bell and more! Walk among places that have made history and places that are making news today. Visit Capitol Hill, government departments, historic sites, and memorials. Meet with the Kansas Congressional and Senate delegations to discuss legislative issues. Participate in workshops and assembly groups to learn life skills and discuss possible solutions to domestic and international problems. Interact with 4-H members from other states, learning and sharing about 4-H and other interests and issues. Registration closes January 15, 2015 or when the limit of 46 youth and 4-5 chaperones is reached. If you are interested in attending or chaperoning visit the CWF webpage at <http://www.kansas4-h.org/p.aspx?tabid=456> for more information.

SAVE THE DATE!

Kansas Junior Swine Producer Day will be February 28, in Weber Arena at KSU.

Johnson County Invitational Dog Show will be April 9, at the Johnson Co. Fairgrounds.

2015 Discovery Days will be May 26-29, at Kansas State University.

Fantastic 4-H Camp will be June 6-9, at Rock Springs 4-H Center.

Johnson County Agility/Rally-O Dog Show will be July 10, at the Johnson Co. Fairgrounds.

2015 Kansas Junior Livestock Show will be October 2-4, at the Kansas State Fairgrounds.

48 hours of 4-H Service Challenge will be October 10-11.

January

- 5 - County Council meeting
 - County Club Day Registration opens
- 10 - Countywide Photography Project Plaza Photo Shoot
- 12 - Horse Panorama paper registration and payment due to Extension office by 5 p.m.
- 13 - Dog Club Spring Training Enrollment due
- 14 - Volunteer Orientation
- 15 - Junior Leaders meeting
- 19 - Martin Luther King, Jr. Day/Extension office Closed
- 26 - Kansas 4-H Scholarship applications due to Extension office by 5 p.m.
- 27 - Club Leader Meeting
- 29 - Volunteer Orientation

February

- 2 - County Council Officers meeting
- 6 - County Club Day Registration closes
- 7 - Food Fare
 - Countywide Photography Project Photo Scavenger Hunt
- 8 - New 4-H Family Orientation
- 9 - Countywide Rabbit Project meeting
- 13 - Club Day payment due
- 19 - Junior Leaders meeting
- 24 - Volunteer Orientation
- 25 - Draft of Club Day schedule posted
- 27 - Final Club Day schedule posted

Check out www.johnson.ksu.edu/4Hforms for the 2014 4-H calendar.

K-STATE

Research and Extension

Johnson County

Cooperative Extension Service Johnson County

K- State Research And Extension

11811 S. Sunset Dr. Suite 1500

Olathe, KS 66061-7057

(913) 715-7000

"Kansas State University Agricultural Experiment Station and Cooperative Extension Service." K-State Research and Extension is committed to making its services, activities and programs accessible to all participants. If you have special requirements due to a physical, vision or hearing disability, please contact the Extension Office at (913) 715-7000. K-State Research and Extension is an equal opportunity provider and employer.

Contact Us!

Tara Markley, 4-H Agent -
tara.markley@jocogov.org

Amanda Fraunfelter, 4-H Program Manager -
amanda.fraunfelter@jocogov.org

Christin Bartels, 4-H Office Professional -
christin.bartels@jocogov.org

Clover Clips News

Clover Clips will no longer be password protected on the website. We hope this will make Clover Clips more accessible to all of our 4-H'ers.

Submission Deadline - The deadline for submissions for Clover Clips will be on the 20th of each month. If that date falls on a weekend please check the 2014 4-H Calendar at www.johnson.ksu.edu/4Hforms for the deadline for that month. If you have a submission that you would like to have considered for an edition of Clover Clips please send it to Christin at christin.bartels@jocogov.org.

Johnson County 4-H on Facebook



'Like' our Facebook page to get the most up-to-date information and news about the happenings of Johnson County 4-H! Visit www.facebook.com/

Leader Update

Community Club Leader Meetings

These meetings are where important information is shared and feedback can be heard. Please have at least one leader present at these meetings.

Upcoming meetings: January 27

April 28

*All meetings are at the Extension office from 6:30–8:30 p.m.

If you have a conflict on these dates please contact Tara.

Club Reminders

Enrollment - Please help us with the process of getting all Johnson County 4-H members to an Active enrollment status in 4HOnline. You can do this by logging in to your club's account, clicking on "Search" at the top left of the page, and checking the "Status" of your club members and volunteers. If the member has completed and submitted an enrollment with Johnson County 4-H it will say either "Active," "Pending," or "Incomplete." If it says Active then their enrollment is complete for the 2014-2015 4-H year. If it says Pending then their enrollment is waiting for review by us at the county level. They will either be accepted (which changes their status to Active) or their enrollment will be sent back to them requesting additions or edits (this action changes their status to Incomplete). If their status is Incomplete then they need to make the additions/edits that were listed in the email they received from 4HOnline and re-submit their enrollment.

Please contact Christin with any questions. Thank you for your help with our new enrollment process!

Participation Forms - If you have not already turned in your club members' participation forms please do so as soon as possible. The participation form can be found at <http://www.johnson.ksu.edu/4Hforms>.

Project Leaders and Volunteers must be Registered Volunteers

Remember that project leaders and volunteers must be Registered Volunteers in order to volunteer for your club.

There are three types of volunteers:

Direct Volunteer: A volunteer with authority to independently plan and conduct educational experiences for youth with adults present or in a public setting OR whose position puts them in close, ongoing, interaction with youth. (Examples: community or organizational leader, project leader, activity leader, judging team coach, camp counselor, event chaperone, exchange trip chaperone, countywide project leader, chauffeur for any 4-H activities, etc.) **Direct Volunteers are required to complete the Kansas 4-H Volunteer Screening Process.**

Episodic Volunteer: A volunteer helping with a single "episode" or activity (usually with a Registered 4-H Volunteer present). Volunteers who are considered episodic volunteers serve as workshop presenters, judges, guest speakers, etc. **Episodic Volunteers are not required to complete the Volunteer Screening process.**

Indirect Volunteer: A volunteer supporting 4-H events or activities but not working directly with youth. Volunteers who are considered indirect volunteers serve on committees or boards. Examples may include local 4-H Foundation Board members or PDC members who don't interact with youth. **This person is not required to complete the Volunteer Screening process.**

For more information on the Volunteer Screening process visit www.johnson.ksu.edu/4Hvolunteer.

Leader Update

Volunteer Orientations for the Volunteer Screening Process

Are you a Leader in your club? Are you leading 4-H youth through project work? Then you need to complete the Kansas 4-H Volunteer Screening Process and become a Registered Volunteer. This process is designed to keep you safe as well as the 4-H'er. One part of the process is the orientation. You can either do this online or attend an in-person orientation. In-person orientations will be held at the Extension office.

Dates: January 14, 2015 – 7-8:30 p.m.
January 29, 2015 – 6:30-8 p.m.
February 24, 2015 – 7-8:30 p.m.

To register, complete the form at <http://goo.gl/forms/qMppKYt0Hq>.

Still have questions about becoming a Registered 4-H Volunteer? Please call the office or visit www.johnson.ksu.edu/4Hvolunteer for more details.

Club Leader Resources Page

Don't forget to check out the Club Leader Resources page at www.johnson.ksu.edu/4Hclubleaders.