



Clover Clips

A newsletter for Johnson County 4-H families.

February 2015 Issue

Page 1

- * 2015 Food Fare
- * New Family Orientation
- * New Section Coming to Clover Clips

Page 2

- * Countywide Photography Project
- * Countywide Rabbit Project
- * Archery 4-H SPIN Club
- * 2015 Horse Shows

Page 3

- * County Club Day
- * Volunteer Orientation
- * Jr. Leaders Info.

Page 4

- * Beekeeping SPIN Club
- * Fantastic 4-H Camp
- * Save these dates...
- * Important Deadlines

Page 5

- * Spring Livestock Shows
- * Cooking Day Camps

Page 6

- * Exchange Hosting Opportunities
- * Ks. Jr. Meat Goat Producer Day
- * 4-H Foster Children Grants
- * State Horticulture Judging Contest

Page 7

- * Feb./Mar. Calendar

Leader Update

Page 8

- * Upcoming Meetings
- * Club Reminders
- * Requirements for Club Volunteers

Page 9

- * Volunteer Orientation

4-H Families,

The second month of the new year is already here! Food Fare, Citizenship in Action, Ambassador Training, and a state shooting match are just a few highlights happening this month! Club Day will be March 7th so please remember to register or mark your calendar to come and support our fine youth demonstrating their creative sides at this great event. -Tara

What Restaurant Would You Copycat?

Food Fare is Saturday, February 7, at the Extension office. This year's theme is Restaurant Copycats! Food Fare will be from 10-11 a.m., then starting at 11 a.m. there will be a 30 minute presentation informing 4-H'ers what to look for when preparing foods for the fair.

Food Fare is an event where 4-H clubs get together and cook food based on a theme. They then share the food with all the Food Fare participants. Since this year's theme is Restaurant Copycats each club participating has picked a restaurant and are recreating a few of the recipes from that restaurant. Currently the restaurants being replicated are Cheesecake Factory, IHOP, Olive Garden, Chipotle, a bakery and coffee shop, New York Dawg Pound, and Panera.

The event is open to the public and is free to attend for all youth and parents. Johnson County 4-H is asking those that attend to bring a non-perishable food item to be donated to local families in need. Registration is required by February 4. The link to register can be found at www.johnson.ksu.edu/4Hfoodfare.

New 4-H Family Orientation

The New Family Orientation is on Sunday, February 8, from 1-2:30 p.m. at the Extension office. All 1st and 2nd year 4-H families are encouraged to attend. To register go to <http://goo.gl/forms/WrLub1ITg2>. The link is also posted on the Johnson County 4-H website at www.johnson.ksu.edu/4Hforms.

Announcing a New Section Coming to Clover Clips!

Attention all club Reporters! Does your club have some exciting news or photos to share? Is there something you think the rest of the county should know that's happening in your club? Then we have a new opportunity for you. The *Reporter's Corner* will be a new section within Clover Clips that will allow space for 4-H club Reporters to submit articles/pictures. We would like to ask you to limit the article to 200 words and it must be submitted to Christin by the Clover Clips submission deadline. Check the 4-H Calendar on the Johnson County 4-H website for each month's submission deadline.

County Project Opportunities

Countywide Photography Project Upcoming Meetings

Photo Scavenger Hunt - We will be meeting on February 7, at 2:30 p.m. at the Food Court at the Mall of the Great Plains on 151st Street in Olathe. Bring your camera and tripod if you have one. We will split into teams and learn different photographic/lighting techniques by doing them. Then we will meet at the Food Court and view each other's photos afterwards. Parents, please stay with your children if possible.

Looking Ahead - No meeting in March due to Club Day and Spring Break. We will be touring a professional portrait studio April 4.

Email questions to the Ladd Family at theladds5@gmail.com.

Countywide Rabbit Project 2015 Meeting Dates and Locations

February 9, March 5, and April 9 - Open Class Building, Johnson Co. Fairgrounds

June 2 - Green Building, Johnson Co. Fairgrounds

All meetings are from 6:30-8 p.m. (Watch upcoming issues of Clover Clips for meeting topics.)

Questions? Contact Susan Rogers at 913-226-6167, urgateway2000@gmail.com or Maribeth Finley at 913-208-3921, finleyfarms@embarqmail.com.



Archery 4-H SPIN Club

Again this year Johnson County 4-H Archery will begin its season in early April with an Archery 4-H SPIN Club. SPIN stands for Special Interest and serves a useful role to introduce new youth to 4-H and allow current members more of an opportunity to experience a project. This is a short term club that will meet six times and allow youth the opportunity to learn the sport of archery from 4-H certified archery instructors. If you are new to 4-H Shooting Sports, simply enrolling in the project does not guarantee the opportunity to shoot with us. Enrollment in the Archery 4-H SPIN Club will provide you that opportunity. Archery 4-H SPIN Club is for any youth between 4-H ages of 9-18 who is not a current member of the 4-H Archery Match Practice group. Previous Archery 4-H SPIN Club participants are welcome to attend. Equipment will be provided at each meeting to all enrolled that have paid the equipment fee (expected to be \$30) and have turned in a Kansas 4-H Participation Form. Spaces will fill up quickly as enrollment will likely be limited to 30 youth.

The goal will be to safely introduce youth to the sport and to develop skills in the sport of Archery. Attendance at this class is also a pre-requisite for anyone wishing to potentially join the Archery Match Practice group this summer and attend Archery matches. Space in that group is very limited. This is the only Archery 4-H SPIN Club currently scheduled for this year. More details and enrollment information will be announced in the March edition of Clover Clips. Online Archery 4-H SPIN Club registration is expected to open in early March. Dates and information will also be posted on the JOCO 4-H Shooting Sports website at www.4-Hshooting.com (click on Archery Club Calendar). For more information, contact Arn Eccles at ec-cles@embarqmail.com.

Johnson County Horse Club 2015 Shows and 2015 District Horse Show

The show bill and entry form for the 2015 Horse Shows put on by the Johnson Co. Horse Club is posted at www.johnson.ksu.edu/4Hlivestock. Countywide level testing will be offered at the May 16th show.

The 2015 East Central District Horse Show is scheduled for July 7, at the Douglas Co. Fairgrounds in Lawrence. Deadline for entries is June 15. For more information visit the District Horse Show links at <http://www.kansas4-h.org/p.aspx?tabid=425>.

Local Opportunities

2015 Johnson County 4-H Club Day

Johnson County's 4-H Club Day is Saturday, March 7, at Wheatridge Middle School in Gardner. Club Day is an opportunity for 4-H'ers to showcase their acting, dancing, public speaking, demonstration, parliamentary procedure and musical skills. Registration and payment links and the guidelines are posted at www.johnson.ksu.edu/4Hclubday. For club group events please have only ONE person from your club complete registration.

Club Day Timeline: February 6: Registration due
February 13: Payment due
February 16-20: Sign up for specific time slots
February 25: First draft of schedule posted
February 27: Final draft of schedule posted

New This Year!!!

Order Johnson County 4-H T-shirts Online and Pick Them Up at Club Day!

We have created an online form for 4-H families to place an order for Johnson County 4-H t-shirts. Orders that are placed by Wednesday, March 4, can be paid for and picked up during Club Day on March 7. The link to the order form is on the Johnson Co. 4-H website at www.johnson.ksu.edu/4Hcouncil. There is also a PayPal link on this page to pay for your order using a credit card. The cost per shirt is \$10. There are youth sizes small to XL and adult sizes small to XL and 3XL.



Regional Club Day

Mark your calendars! Regional 4-H Club Day is scheduled for March 28, at Eudora High School. 4-H'ers receiving a top purple ribbon at County 4-H Club Day will have the opportunity to represent Johnson County at regionals.

Volunteer Orientation for the Volunteer Screening Process

Are you a leader in your club? Are you leading 4-H youth through project work? Then you need to complete the Kansas 4-H Volunteer Screening Process and become a Registered Volunteer. This process is designed to keep you safe as well as the 4-H'er. One part of the process is the orientation. You can either do this online or attend an in-person orientation. In-person orientations are held at the Extension office.

Date: February 24, 2015 – 7-8:30 p.m.

To register, complete the form at <http://goo.gl/forms/qMppKYt0Hq>.

Still have questions about becoming a Registered 4-H Volunteer? Please call the office or visit www.johnson.ksu.edu/4Hvolunteer for more details.

Countywide Junior Leaders

Next meeting: Thursday, February 19, at 6:30 p.m. at the Extension office

Who is eligible? Any 4-H'er between the ages of 12-18 who is interested in expanding their leadership opportunities and further developing their leadership skills in a fun environment with other 4-H'ers from across the county!

New meeting date and time: 3rd Thursday of every month at 6:30 p.m. at the Extension office.

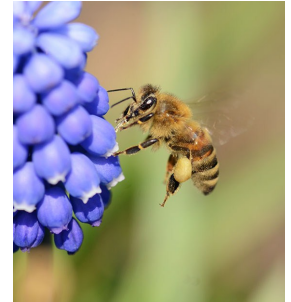
Please also visit the Johnson County 4-H website at www.johnson.ksu.edu/4Hjuniorleaders for information about the summer 2016 Citizen Washington Focus delegation trip.

Local Opportunities

Beekeeping 4-H SPIN Club

This SPIN club will meet most Sundays starting March 29, and will help youth learn about the importance of bees to our agriculture and how to raise domestic bees. Areas of study will be the types of bees, the honey and wax they produce, the plants that attract bees, and the equipment a beekeeper needs. Participants will learn basic beehive care, as well as how to extract and bottle honey.

Registration will open February 13, and is limited to the first 20 participants. Cost to register is \$20. The registration link will be posted on the Johnson County 4-H website at www.johnson.ksu.edu/4Hspin.



Fantastic 4-H Camp News

This year Fantastic 4-H Camp will be June 6-9, 2015. This camp is a four day/three night camp experience for ALL youth ages 7-12. 4-H membership is not required. Campers will ride horses, go canoeing, hike the trails and jump in the pool. There will also be singing songs by the campfire, making crafts and meeting new friends. Fantastic 4-H Camp is located at Rock Springs 4-H Center near Junction City, Ks. Transportation is provided.

Registration will open Monday, February 9. Visit www.johnson.ksu.edu/4Hcamps for more information about this camp and for directions on how to register and make your payment online.

SAVE THE DATE!

Johnson County Invitational Dog Show will be April 9, at the Johnson Co. Fairgrounds.

Shooting Sports Coordinators & Instructors Training will be April 24-26, at Rock Springs 4-H Center.

2015 Discovery Days will be May 26-29, at Kansas State University.

Tailwaggers & Miami County Dog Show will be June 20, at the Johnson Co. Fairgrounds.

Johnson County Agility/Rally-O Dog Show will be July 10, at the Johnson Co. Fairgrounds.

2015 Kansas Junior Livestock Show will be October 2-4, at the Kansas State Fairgrounds.

48 Hours of 4-H Service Challenge will be October 10-11.

Important Deadlines to Remember

Adding/Dropping Projects

The project add/drop deadline for new and returning 4-H'ers is May 1. 4-H'ers who have not established project enrollment by May 1 will not be eligible to exhibit in the corresponding project area at the Johnson County Fair. Project enrollment is an important component of the project experience. This year and going forward, with 4HOnline 4-H families can update this information any time by simply editing the 4-H'er's profile. This option will be available until midnight on May 1 and then after that the system will not allow any changes to be made to 4-H'ers' projects. If you have questions please contact your club leader or the Extension office.

Horse Identification and Horseless Horse Certificates

All Horse Identification Certificates and Horseless Horse Certificates are due to the Extension office by 5 p.m. on May 1. Appropriate forms can be found at www.johnson.ksu.edu/4Hlivestock.

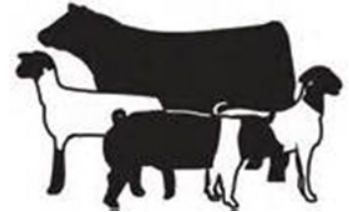
KJLS and KSF Market Beef Nominations

4-H members planning on showing their animals at the Kansas Junior Livestock Show and/or the Kansas State Fair need to have nominations to the Youth Livestock office by May 1. Information pertaining to the Kansas Livestock Nominations can be found at www.YouthLivestock.KSU.edu.

Local Opportunities

2015 SPRING LIVESTOCK SHOWS

Registration details and more information about each show can be found at www.johnson.ksu.edu/4Hlivestock.



Spring Beef Show - April 18

The Spring Beef Show will be held Saturday, April 18, at the Johnson Co. Fairgrounds, beginning at 10 a.m. Pre-registration is due by April 1. The entry fee is \$10 per head, then goes up to \$20 per head after April 1. All market steers and heifers will be weighed from 7-9 a.m. on Saturday morning. 4-H Beef project members not showing in the Spring Beef Show will be allowed to weigh their animals from 6-8 p.m. on Friday, April 17, at the Johnson Co. Fairgrounds.

Spring Goat Show - May 23

The Spring Goat Show will be held Saturday, May 23, at the Johnson County Fairgrounds, beginning at 9 a.m. Pre-registration is due by May 1. The entry fee is \$10 per head, then goes up to \$20 per head after May 1. Weigh-in will be 7-8 a.m. Saturday morning. 4-H Goat project members not showing in the Spring Goat Show will be allowed to weigh their animals from 4-8 p.m. on Friday, May 22 at the Johnson Co. Fairgrounds.

Spring Sheep Show - May 23

The Spring Sheep Show will be held Saturday, May 23, at the Johnson Co. Fairgrounds, beginning at 11 a.m. or 30 minutes after the conclusion of the goat show. Pre-registration is due by May 1. The entry fee is \$10 per head, then goes up to \$20 per head after May 1. Weigh-in will be 8-9 a.m. Saturday morning. 4-H Sheep project members not showing in the Spring Sheep Show will be allowed to weigh their animals from 4-8 p.m. on Friday, May 22 at the Johnson Co. Fairgrounds.

Spring Swine Show - May 24

The Spring Swine Show will be held Sunday, May 24, at the Johnson Co. Fairgrounds, beginning at 10 a.m. Pre-registration is due by May 1. The entry fee is \$10 per head, then goes up to \$20 per head after May 1. Weigh-in will be 7-9 a.m. 4-H Swine project members not showing in the Spring Swine Show will be allowed to weigh their animals from 4-8 p.m. on Friday, May 22 at the Johnson Co. Fairgrounds.

Spring Bucket Calf Show - May 24

The Spring Bucket Calf Show will be held Sunday, May 24, at the Johnson Co. Fairgrounds, beginning at 1 p.m. or 30 minutes after the conclusion of the swine show. Pre-registration is due by May 1. The entry fee is \$10 per head, then goes up to \$20 per head after May 1. Weigh in will be 8-10 a.m. 4-H Bucket Calf project members not showing in the Spring Bucket Calf Show will be allowed to weight their animals from 4-8 p.m. on Friday, May 22 at the Johnson Co. Fairgrounds.

Summer Cooking Day Camps



There will be two options available this year for the Cooking Camp: June 16-18 or July 14-16. Both sessions will feature the same recipes and activities. The Cooking Day Camps are open to youth ages 7-11 and are held at the Extension office from 9 a.m.-noon. Registration is \$50 per session and will open February 16. The registration link will be posted on the Johnson County 4-H website at www.johnson.ksu.edu/4Hcamps.

State Opportunities

International Exchange Hosting Opportunities

1) Families wishing to host a teen between the ages of 14 and 18 from Costa Rica or Norway June 24-July 19 should apply by February 15. To host one of these young people, a family must have a member who is the same gender as, and within two years of the age of, their exchangee. Hosts are also needed for the chaperones and there are no youth in the home requirements. Applications for hosting through States' 4-H are completed online.

2) Any family interested in hosting a Japanese or Korean student for the 2015-16 school year through 4-H may apply now to get to choose from a larger pool. Student applications will be available around February 1. Approved families may request country, gender, as well as interests and hobbies before the pool is opened up nationally. These students stay with one family from August until June.

A link to more information about hosting and the applications is on the Kansas 4-H website at www.kansas4-H.org, under "What's Hot."

Kansas Junior Meat Goat Producer Day

Kansas Junior Meat Goat Producer Day will be held on Saturday, March 28, 2015, at K-State's Weber Hall in Manhattan, Ks. Presentations and demonstrations by a featured speaker(s), as well as K-State faculty will cover topics such as selection, facilities and general care, health and vaccinations, nutrition, and showmanship. This interactive workshop is designed for all ages and skill levels. All participants will receive a T-shirt, complimentary lunch, and educational materials. More information coming soon.

Grants Available for Foster Children

The purpose of the Kansas 4-H Resource Family Project and Camp Grant Programs is to provide financial assistance for foster youth and their resource families who want to participate in learning opportunities available through 4-H. Through the Kansas 4-H Foundation, \$5,000 in grant funds is available to support foster care families and the children in their care who are current or potential 4-H members. Grant applications are due May 1. For the application and instructions visit the Kansas 4-H website at <http://www.kansas4-h.org/p.aspx?tabid=434>.

2015 State Horticulture Judging Contest Information

The State 4-H Horticulture Judging Contest will be held Saturday, August 22, on the campus of Kansas State University. The study material for the years 2015 and 2016 is taken from ***The Kansas Garden Guide***, KSRE publication S-51 (Rev.) March 2010. This publication is available for purchase at the Extension office or can be downloaded at <http://www.ksre.ksu.edu/bookstore/pubs/s51.pdf>. The written exam selections from ***The Kansas Garden Guide*** include pages 5-23 (Introduction, Planning a Garden, Composting, Soil Improvement, Seeding and Planting) and pages 71-74 (Herbs). Be sure to use the 2010 version of the garden guide. This information will be available on the Kansas 4-H website on the Horticulture Judging Contest page at <http://www.kansas4-h.org/p.aspx?tabid=442>. Effective January 1, 2015, contestants who have judged as an official team member at the National Junior Horticulture Association Judging Contest are not eligible to compete as a team or as an individual at the State Kansas 4-H Horticulture Judging Contest.



February

- 4 - Deadline to register to attend Food Fare
- 6 - Club Day Registration closes
- 7 - Food Fare
 - Countywide Photography Project Photo Scavenger Hunt
- 8 - New 4-H Family Orientation
- 9 - Countywide Rabbit Project meeting
- 13 - Club Day payment due
 - Beekeeping SPIN Club Registration opens
- 16 - Sign up opens for Club Day time slots
 - Summer Cooking Camp Registration opens
- 19 - Junior Leaders meeting
- 20 - Sign up for Club Day time slots closes
- 24 - Volunteer Orientation
- 25 - Draft of Club Day schedule posted
- 27 - Final Club Day schedule posted

March

- 2 - County Council meeting
- 4 - T-shirt orders due for pick up at Club Day
- 5 - Countywide Rabbit Project meeting
- 7 - Club Day
- 19 - Junior Leaders meeting
- 28 - Regional Club Day
- 31 - Community Club Leader meeting

Check out www.johnson.ksu.edu/4Hforms for the 2014 4-H calendar.

K-STATE

Research and Extension

Johnson County

Cooperative Extension Service Johnson County

K- State Research And Extension

11811 S. Sunset Dr. Suite 1500

Olathe, KS 66061-7057

(913) 715-7000

"Kansas State University Agricultural Experiment Station and Cooperative Extension Service." K-State Research and Extension is committed to making its services, activities and programs accessible to all participants. If you have special requirements due to a physical, vision or hearing disability, please contact the Extension Office at (913) 715-7000. K-State Research and Extension is an equal opportunity provider and employer.

Contact Us!

Tara Markley, 4-H Agent -
tara.markley@jocogov.org

Amanda Fraunfelter, 4-H Program Manager -
amanda.fraunfelter@jocogov.org

Christin Bartels, 4-H Office Professional -
christin.bartels@jocogov.org

Clover Clips Submission Deadline

The deadline for submissions for Clover Clips will be on the 20th of each month. If that date falls on a weekend please check the 2015 4-H Calendar at www.johnson.ksu.edu/4Hforms for the deadline for that month. If you have a submission that you would like to have considered for an edition of Clover Clips please send it to Christin at christin.bartels@jocogov.org.



Johnson County 4-H on Facebook

'Like' our Facebook page to get the most up-to-date information and news about the happenings of Johnson County 4-H! Visit www.facebook.com/

Leader Update

Community Club Leader Meetings

These meetings are where important information is shared and feedback can be heard. Please have at least one leader present at these meetings.

Upcoming meetings: March 31

*All meetings are at the Extension office from 6:30–8:30 p.m.

If you have a conflict on these dates please contact Tara.

Club Reminders

Enrollment - Please help us with the process of getting all Johnson County 4-H members to an Active enrollment status in 4HOnline. You can do this by logging in to your club's account, clicking on "Search" at the top left of the page, and checking the "Status" of your club members and volunteers. If the member has completed and submitted an enrollment with Johnson County 4-H it will say either "Active," "Pending," or "Incomplete." If it says Active then their enrollment is complete for the 2014-2015 4-H year. If it says Pending then their enrollment is waiting for review by us at the county level. They will either be accepted (which changes their status to Active) or their enrollment will be sent back to them requesting additions or edits (this action changes their status to Incomplete). If their status is Incomplete then they need to make the additions/edits that were listed in the email they received from 4HOnline and re-submit their enrollment.

Please contact Christin with any questions. Thank you for your help with our new enrollment process!

Participation Forms - If you have not already turned in your club members' participation forms please do so as soon as possible. The participation form can be found at <http://www.johnson.ksu.edu/4Hforms>.

Project Leaders and Volunteers must be Registered Volunteers

Remember that project leaders and volunteers must be Registered Volunteers in order to volunteer for your club.

There are three types of volunteers:

Direct Volunteer: A volunteer with authority to independently plan and conduct educational experiences for youth with adults present or in a public setting OR whose position puts them in close, ongoing, interaction with youth. (Examples: community or organizational leader, project leader, activity leader, judging team coach, camp counselor, event chaperone, exchange trip chaperone, countywide project leader, chauffeur for any 4-H activities, etc.) **Direct Volunteers are required to complete the Kansas 4-H Volunteer Screening Process.**

Episodic Volunteer: A volunteer helping with a single "episode" or activity (usually with a Registered 4-H Volunteer present). Volunteers who are considered episodic volunteers serve as workshop presenters, judges, guest speakers, etc. **Episodic Volunteers are not required to complete the Volunteer Screening process.**

Indirect Volunteer: A volunteer supporting 4-H events or activities but not working directly with youth. Volunteers who are considered indirect volunteers serve on committees or boards. Examples may include local 4-H Foundation Board members or PDC members who don't interact with youth. **This person is not required to complete the Volunteer Screening process.**

For more information on the Volunteer Screening process visit www.johnson.ksu.edu/4Hvolunteer.

Leader Update

Volunteer Orientation for the Volunteer Screening Process

Are you a Leader in your club? Are you leading 4-H youth through project work? Then you need to complete the Kansas 4-H Volunteer Screening Process and become a Registered Volunteer. This process is designed to keep you safe as well as the 4-H'er. One part of the process is the orientation. You can either do this online or attend an in-person orientation. In-person orientations are held at the Extension office.

Date: February 24, 2015 – 7-8:30 p.m.

To register, complete the form at <http://goo.gl/forms/qMppKYt0Hq>.

Still have questions about becoming a Registered 4-H Volunteer? Please call the office or visit www.johnson.ksu.edu/4Hvolunteer for more details.

Club Leader Resources Page

Don't forget to check out the Club Leader Resources page at

www.johnson.ksu.edu/4Hclubleaders.