

# Clover Clips

A newsletter for Johnson County 4-H families.

## June 2021 Issue

### Page 1

- \* Note from Molly
- \* Leadership Camp
- \* Food Stand Help Needed

### Page 2

- \* Livestock Nominations for State Shows
- \* YQCA Requirements
- \* 4-H Policy Highlight

[Annual Fair Edition](#)  
[Pages 3-7](#)

### Page 8

- \* Livestock Grant/Mentor Program
- \* Countywide Sewing Group
- \* Educational Kit Check Out

### Page 9

- \* Countywide Knitting Proj.
- \* Dog Club Dog Shows
- \* Tail Waggers Dog Show
- \* Telescope Workshop

### Page 10

- \* Volunteers Needed to Share about Projects
- \* Jo. Co. Scholarships
- \* Project Report Form Resources
- \* Virtual STEAM Academy
- \* Food Science Camp

[Reporter's Corner](#)  
[Page 11-12](#)

### Page 13

- \* June/July Calendar

## Leader Update

### Page 14

- \* New Family Enrollment
- \* Support for Families
- \* Requirements for Club Volunteers
- \* Leader Resources

## 4-H Families,

Congratulations to our graduating seniors! We look forward to hearing and sharing your stories with the community this summer but we are confident that you will continue making the best better no matter what path you decide to follow. We do have some staffing changes in the Extension office, but we are happy for Molly's next adventures and new opportunities. We will formally welcome and introduce our newest 4-H team member in June as she brings her experience as a Wyandotte County 4-H'er and knowledge of natural resources to share with us. -Ami

## A Note from Molly Maddy

I wanted to share with you that I am resigning my position as the 4-H Program Manager and my last day will be May 28. My significant other and I are off to new adventures as we've both accepted positions and will be moving out of Johnson County. Although I was only here for a short amount of time, you have made a great impact in my life and it was a privilege to work with you all! As an alumni of Kansas 4-H, it makes me very proud to see how the 4-H program is so strongly rooted and represented in this community and how you've all worked to "Make the Best Better." I've been inspired by the passion and leadership of the youth and families and I thank you for the wonderful experiences over this past year, I wish you all the best.

- Molly

## Leadership Camp

The Johnson County 4-H Ambassadors are hosting a Leadership Day Camp for all youth ages 8-12 on Tuesday, July 6, from 1-5 p.m. at the Johnson County Fairgrounds. During this camp, participants will engage in fun activities and games that will build leadership and teamwork skills. A \$12 registration fee will cover material costs and snacks. Space is limited so register now at [www.johnson.k-state.edu/classes-events/](http://www.johnson.k-state.edu/classes-events/)! Registration will close after June 28.

## Food Stand Help Needed

A responsible and organized adult volunteer (18+) is needed to serve as a 4-H Food Stand Assistant for this year's Johnson County Fair. The 4-H Food Stand is the largest fundraiser for 4-H Council and helps to pay for County Club Day, Achievement Celebration, Style Revue, and more. The position does come with a stipend. Please see the Position Description posted at [www.johnson.k-state.edu/4-h/events-programs/council.html](http://www.johnson.k-state.edu/4-h/events-programs/council.html).

# June Livestock Deadlines

## **Nomination Information for State Livestock Shows**

4-H members planning on showing their animals at the Kansas Junior Livestock Show (KJLS) and/or the Kansas State Fair must submit nominations to the K-State Youth Livestock office. Commercial Heifer, Swine, Sheep, and Meat Goat nominations are due by June 15. (Market Beef nominations were due May 1.) Information pertaining to the Kansas Livestock Nominations can be found at [www.YouthLivestock.ksu.edu](http://www.YouthLivestock.ksu.edu).

**YQCA Certification Requirement** - As a reminder, YQCA certification is required to participate at KJLS and at the Kansas State Fair. See below for more information about YQCA Certification.

## **YQCA Requirements**

**What is YQCA?** Youth for the Quality Care of Animals (YQCA) is a national, multi-species youth livestock quality assurance program that focuses on food safety, animal wellbeing, and character development, through age-appropriate educational curriculum for ages 7-21. This program is an annual certification that grows with the youth, so the learning modules are different every year.

### **Who needs to be certified?**

*Johnson County Fair Exhibitors:* All youth age 8 and older exhibiting in the beef, goat, sheep and/or swine project must be YQCA certified by June 15, 2021 in order to exhibit at the fair.

*Exhibitors at State Livestock Shows:* All youth age 7 and older who will be exhibiting market or breeding animals in the Kansas State Fair Grand Drive or Kansas Junior Livestock Show (KJLS) are required to obtain certification.

**How do I get certified?** Certification can be done by taking a minimum one hour in-person training or an online training. Both types of trainings are registered for and paid for by going to [www.YQCA.org](http://www.YQCA.org) and logging into the system through 4-H Online using your current login information. All registration and payment is handled through the YQCA website and must be done before attending either type of training. The online training is \$12 per youth and the in-person training is \$3 per youth. (If a family needs financial support, contact the Extension office.) Please remember to print your YQCA certificate and bring it to the county fair.

For more information visit [www.johnson.k-state.edu/4-h/events-programs/livestock.html](http://www.johnson.k-state.edu/4-h/events-programs/livestock.html). Contact the Johnson County 4-H office with questions.

## **Kansas 4-H Policy Highlight of the Month**

**Did you know...** Each 4-H Club or other Extension affiliated group bank account should have two signatures for expenditures (checks or withdrawals). There should be at least two screened, non-related, and board approved adult volunteers as signatories on 4-H Club accounts. For more information, see section 7.4: Club Finance in the Kansas 4-H Policy Handbook ([www.kansas4-h.org/about/policy-guide.html](http://www.kansas4-h.org/about/policy-guide.html)).

# Fair Edition

## Pullorum Testing for Poultry Exhibitors

Kansas continues to be a Pullorum-Typhoid (P-T) Clean State, which means that all poultry (except waterfowl) involved in exhibitions, such as the county fair, are required to either originate from a hatchery or breeding flock that is classified as U.S. P-T Clean through the National Poultry Improvement Plan (NPIP) or test negative on a pullorum-typhoid test within 90 days prior to the opening date of exhibition. Testing is generally completed at least 2 weeks prior to exhibition start date. This ensures Avian Influenza testing is complete and mitigates the risk of comingling birds with unknown health status. More information about poultry testing can be found under the “Resources” heading at [www.johnson.k-state.edu/4-h/events-programs/livestock.html](http://www.johnson.k-state.edu/4-h/events-programs/livestock.html).

The Johnson County 4-H Fair Book states: “All Poultry, except waterfowl, must show proof that they are pullorum-typhoid clean at the time of entry.”

**Available Testing:** Wyandotte County K-State Research and Extension will be hosting a testing site at the Wyandotte County Fairgrounds on **June 23 from 5-7 p.m.**

If you are unable to make it to that testing site, please contact Jeff Bingman, 4-H Poultry Chair, at [jbingman12@sbcglobal.net](mailto:jbingman12@sbcglobal.net) for other options.

## 2021 Johnson County 4-H Fair Book Updates

Following are updates to the 2021 Johnson County Fair 4-H Book:

**Horses:** “Exhibitors will be required to stall their horse or horses in the horse barn for the duration of the fair.”

**Meat Goat-Wether:** “Wethers are suggested to arrive without horns. If horned, the horns must be tipped and rounded. Tipping and removal of horns is NOT allowed on the fairgrounds and must be done prior to arrival.”

**Poultry, Pigeons & Doves:** “Poultry, Pigeons and Dove entries will be checked in on Tuesday, 8am-11am.”

**YQCA:** 7-year-olds are exempt from becoming certified in order to exhibit beef, sheep, goats and/or swine at the Johnson County Fair. (**Note:** 7-year-olds must still be certified in order to exhibit at the Kansas Junior Livestock Show.)

**Livestock Judging Contest:** The Livestock Judging Contest has been changed to a Livestock Skillathon event.

## Kansas State Fair and State Livestock Shows Updates

The Kansas State Fair 4-H Exhibitor Handbooks are now available at [www.kansas4-h.org/events-activities/fairs/kansas-state-fair/](http://www.kansas4-h.org/events-activities/fairs/kansas-state-fair/). Here are some of the new updates for 2021:

- There are no fair premiums this year, except possibly for sponsored livestock shows. However, all exhibitors will be eligible to receive two entry tickets to the KSF.
- Two new departments were added: 4-H STEM-Ag Mechanics and 4-H STEM-Architectural Block Construction.
- Visual Arts entries will now be judged at the KSF and emphasis is placed on original designs. (Top exhibits at the Johnson County Fair will have priority for submission.)
- Updates have been made to the Poultry Judging Contest.
- A breeding doe show has been added to the KSF Grand Drive and the Kansas Junior Livestock Show.
- Kansas Junior Livestock Show will be adding a Berkshire division to swine.

# Fair Edition

## 2021 Johnson County 4-H Fair Book

An electronic version of the 2021 Johnson County 4-H Fair Book is available to view at [www.johnson.k-state.edu/4-h/events-programs/johnson-county-fair.html](http://www.johnson.k-state.edu/4-h/events-programs/johnson-county-fair.html). There will not be a hard copy version printed this year.

## County Fair Entries

4-H entries for exhibits judged during the county fair will be due July 21. All entries for clothing construction, dog show, fashion revue, fiber arts, and home environment will be due on **July 1**. Late entries will not be accepted and if a 4-H'er does not meet the deadline they will not be allowed to have their item or project judged in the 4-H division.

All sheep, swine, beef and goat exhibitors will be required to submit stall requests and tag numbers by July 21. If your family has weighed and tagged their animals under a family nomination, you will be required to enter the tag number(s) with the 4-H member's name who is exhibiting the animal by the July 21 deadline. Livestock exhibitors: you must enter in showmanship if you plan on exhibiting in showmanship.

Only online entries are accepted. The entry system typically opens around June 1 and is accessible through the Johnson County Fair website at [www.jocokansasfair.com](http://www.jocokansasfair.com). **Note:** Once an entry is submitted it cannot be edited. If assistance is needed in making online entries please contact the Extension office or the Fair office. It is highly recommended that you print off your entry confirmation.

After the entry deadline adding an entry is not an option. If you are not sure about what you are taking to the fair, please wait until closer to the deadline to make your entries. This will help keep dropped entries to a minimum as the Fair Board has to pay for each dropped entry.

**All entries including livestock must be accompanied at check-in with a printed entry tag.**

## New 4-H Departments at the Johnson County Fair

Two new departments were added to the 4-H STEM division at the Kansas State Fair this year, therefore the Extension office has decided to allow entries corresponding to these two departments in the 4-H division of the Johnson County Fair. (**Note:** Public display of entries may be limited this year at the county fair.) The new departments are Ag Mechanics and Architectural Block Construction (ABC). A short description of each is below and more information, including how to enter exhibits for the county fair, is posted on the Johnson County 4-H website at [www.johnson.k-state.edu/4-h/events-programs/johnson-county-fair.html](http://www.johnson.k-state.edu/4-h/events-programs/johnson-county-fair.html).

**STEM-Ag Mechanics**—The project is starting with an emphasis on welding and smithing, it will expand as the project area grows. This project allows youth to explore areas of ag mechanics and metallurgy from repairing or repurposing items to the fabrication of new items. The intent is for this program to start with foundational areas, some of which youth may already have, and allow them to continue to build on this knowledge becoming more experienced. 4-H'ers must be enrolled in the STEM–Ag Mechanics project.

**STEM-Architectural Block Construction**—The project is starting with an emphasis on using architectural blocks (“Legos”) to construct dioramas. This project allows youth to explore architectural design in a three dimensional space. The intent is for this program to start with foundational ideas of architecture, some of which youth may already have, and allow youth to continue to build on this knowledge becoming more experienced. 4-H'ers must be enrolled in the STEM–Architectural Block Construction project.

# Fair Edition

## Mr. and Miss 4-H

The Johnson County Mr. and Miss 4-H Program recognizes young people for the leadership and commitment they have contributed to the 4-H program and their communities. All 4-H'ers who have been a member for at least three years and are at least 13 (before January 1, 2021) are eligible to apply. More information about the Mr. and Miss 4-H Program can be found at [www.johnson.k-state.edu/4-h/events-programs/mr-and-miss-4-h.html](http://www.johnson.k-state.edu/4-h/events-programs/mr-and-miss-4-h.html). The application is also posted on this website and is due July 1. Interviews will be held on July 15. Coronation will take place during Public Fashion Revue on the evening of July 21.

## Food and Clothing Labels

Food labels (including those for Food Preservation) are available on the Johnson County 4-H website at [www.johnson.k-state.edu/4-h/events-programs/johnson-county-fair.html](http://www.johnson.k-state.edu/4-h/events-programs/johnson-county-fair.html) to print off at home, or they can be picked up at the Extension office.

Clothing labels can be made by printing in ink on a 3" x 5" piece of cloth: Class Number, County, Name, Age and Level. Please refer to your department's rules in the fair book regarding labels.

## Departmental Forms

Some departments such as Energy Management, Fashion Revue, and STEM, require additional forms along with the entry. These forms will be posted when available on the Johnson County 4-H website at [www.johnson.k-state.edu/4-h/events-programs/johnson-county-fair.html](http://www.johnson.k-state.edu/4-h/events-programs/johnson-county-fair.html). Please refer to each department's rules in the fair book regarding what forms are required.

## Photo Mats and Photo Sleeves

The Extension office has photo mats and protective photo sleeves available for purchase. The cost for the pair is \$1.50. **\*New this year\*** You will not receive the photo sleeve at the time of purchase. Photos will be placed in the photo sleeve by the superintendents during judging. Use a large zip top bag to transport your photo(s) to the fairgrounds for judging. Photos exhibited in the 4-H Photography division at the county fair are required to be mounted on a photo mat. Photo mounting directions and labels can be picked up at the Extension office and they are also posted at [www.johnson.k-state.edu/4-h/events-programs/johnson-county-fair.html](http://www.johnson.k-state.edu/4-h/events-programs/johnson-county-fair.html) to print at home.

## Entering Quilts in the Fair

If you are entering a quilt in the Johnson County Fair the ideal department to enter it in is the Fiber Arts department. The judge for Fiber Arts will be more experienced with quilts and therefore better able to give 4-H'ers helpful feedback.

## **SAVE THE DATE!**

**Fall Tractor Supply Paper Clover Fundraiser** will be October 6-17.  
**48 Hours of 4-H Service Challenge** will be October 9-10.

# Fair Edition

## **Update! 4-H Foods Judging**

Foods Judging will take place on Monday, July 26 from 9 a.m.-8 p.m. and will utilize a time slot sign-up system. The location for 4-H Foods Judging is still to be determined. If your family would prefer to drop off foods entries and not participate in in-person judging, a sign-up will also be available to choose a time slot that day to drop off the entries.

As you research and test recipes for your food entries, make sure to check out the “4-H Foods Entry Tips for Fair” document posted on Johnson County 4-H website at [www.johnson.k-state.edu/4-h/events-programs/johnson-county-fair.html](http://www.johnson.k-state.edu/4-h/events-programs/johnson-county-fair.html).

**Canning and Preservation fair classes:** 4-H’ers should only use CLEAR canning jars for the fair. Save the colored blue and green canning jars for home use. Colored jars may have to be opened to check canned ingredients and if it is opened it cannot go on for further judging. This is a food safety issue.

If you have any questions about your food entry, please contact the Extension office.

## **Project Check-in and Judging**

Similar to last year, families will sign-up for static project check-in and conference judging slots online by departments. The schedule has not been finalized yet, however please allow time from Sunday, July 25 through Tuesday, July 27 for project check-in and conference judging. If your family will not be available on the date of judging or would prefer not to participate in in-person judging, there will be a curbside drop-off time on Sunday, July 25.

Entries for departments judged before fair will have a separate judging schedule. Families enrolled in the corresponding projects in 4-H Online will receive information detailing judging for these departments. Livestock exhibitors, please refer to the fair book for your check-in time.

## **Cloverbuds Show and Share**

Enrolled Cloverbuds are invited to participate in Show and Share on Tuesday, July 27. This is a reminder that Cloverbuds are not eligible to compete in the 4-H division at the fair. Full membership starts when youth turn 7 before January 1 of the current 4-H year. Cloverbuds are encouraged to show and share 1-2 projects. A sign-up for time slots will be available at a later date. For more information about activities for Cloverbuds, visit [www.kansas4-h.org/p.aspx?tabid=399](http://www.kansas4-h.org/p.aspx?tabid=399).

## **4-H Food Stand**

The 4-H Food Stand is a great way for youth to help raise funds for Johnson County 4-H Council while practicing safe food handling, interacting with the community and working collaboratively with their club members! Be prepared to work a short shift at the 4-H Food Stand during Fair on your club’s assigned day. The funds raised help sponsor county events such as Club Day and Achievement Celebration and provide transportation and scholarships for state events such as Discovery Days and 4-H Camp. The Food Stand Committee is working diligently to plan new menu items and new hours to revamp the Food Stand this year!

# Fair Edition

## Livestock T-shirts

The Johnson County Fair Association requires all livestock exhibitors to wear Johnson County Fair t-shirts when exhibiting livestock at the fair. The fair association will have a new shirt this year that is navy with red and white detail and incorporates the theme “Heroes Unite.” This requires the purchase of new shirts for the 2021 fair. The cost is \$10 per shirt. Please send payment and size needed to Allyssa King at 32415 W 95th St, De Soto, KS 66018. Make checks out to Johnson County Fair Assn. Shirt sizes for youth are small, medium and large. Adult sizes are small, medium, large, XL, and XXL. The Fair Association will be ordering very few extra shirts, so if you need one **please have your order in by June 1, 2021.**

## Livestock and Project Auctions

See the 4-H/FFA Livestock Auction section or the 4-H/FFA Project Auction section in the 4-H Fair Book for more details about the Livestock Auction and Project Auction.

**Livestock Auction:** In order to sell their livestock, exhibitors must turn in auction forms and fill out and sign a W-9 IRS Form by 4 p.m. on Tuesday (with the exception of Grand and Reserve Grand Champion in each species).

**Project Auction:** Project auction entry forms must be turned in by 12 p.m. on Thursday in the Green Building. No late entries will be accepted. An exhibitor selling a project for \$600 or more must complete a W-9 Tax ID (social security) form to the Extension office within 5 days of the auction.

## State Fair Entries

4-H exhibits that receive a purple ribbon are eligible to enter at the Kansas State Fair as long as there is a comparable department at the State Fair. To enter in the Kansas State Fair, 4-H members must be 9 before January 1, 2021. 4-H’ers who qualify to exhibit at the State Fair may sign up in the Fair Office from 3-5 p.m. on Thursday, July 29 and Friday, July 30. You may also call or email Christin with your entries. All entries must be into the Extension office by 5 p.m. Friday, August 6. **Please note:** beef, sheep, swine and meat goat entries for the Kansas State Fair are due by July 15 and Horse Show entries are due by August 1. These projects have a separate entry process.

## Project Pick Up

All 4-H livestock and horses can be removed from the fairgrounds after 6 a.m. on Sunday, August 1. This year, all static exhibits will be released by club at a predetermined time. The schedule will be published as soon as it has been finalized. **4-H’ers must pick up their entries or make prior arrangements with another 4-H family to pick up their entries on Sunday morning.** If a 4-H’er does not pick up their entries it is the responsibility of the Club Leader to collect the rest of the club’s entries.

Premium money will be available for pick up after the fairgrounds have been cleaned. It is expected that all 4-H exhibitors and their families help with fair clean-up. Requested corrections to premium checks must be submitted to the Fair Office by 12 p.m. on Sunday.

# County Project Opportunities

## Livestock Grant and Mentor Program

Are you a current 4-H'er enrolled in a livestock project who could use some additional funding to purchase your animal OR are you a 4-H'er with a desire to participate in a livestock project but are unsure of how to afford the purchase of an animal or where to start? The Johnson County Livestock Association is providing youth an opportunity to apply for funds to raise 4-H livestock through a Grant and Mentor Program. Grant winners will be teamed up with a Mentor who will assist them in learning about the project. The Grant winners' funds can be used for purchases of 2022 livestock projects. The Mentor funding will be paid to the recipient upon completion of the mentorship experience.

The Grant Program funds will be awarded to 4-H members planning to enroll (for the 2022 4-H year) in the following projects: \$1,100 to a 4-H'er enrolled in the beef project and \$300 each to 4-H'ers enrolled in the sheep, swine, and goat projects. Experienced 4-H'ers who apply for the Mentor Program could earn \$500 for the beef project and \$300 for each of the sheep, swine, and goat projects.

If you would like to apply for the Grant Program or Mentor Program, please fill out an application and return it to the Extension office by June 1, 2021. Applications are available online at [www.johnson.k-state.edu/crops-livestock/johnson-county-livestock-association.html](http://www.johnson.k-state.edu/crops-livestock/johnson-county-livestock-association.html).

---

## Countywide Sewing Project Meetings

Meetings for the Johnson County 4-H sewing project are held at the Extension office on Thursdays and start at 6:30 p.m. COVID-19 mitigation strategies are in place. **There will be no sewing class on July 8.** Meetings are open to new sewers, youth that have sewn previously and even experienced sewers with great skills! Youth will learn all the basics, brush up current skills and get ready for the fair.

The last meeting will be held on July 15, and at that meeting Martha will go over what is needed for Clothing Construction and Fashion Revue Judging. Judging for these projects will be held at Aldersgate United Methodist Church starting at 8:30 a.m. on July 17. If you are curious about what is needed for judging, how to model for Fashion Revue, etc. this is the meeting for you! Contact Martha Powell, county sewing leader, at [mmp4powell@yahoo.com](mailto:mmp4powell@yahoo.com) or 913-302-5812 with any questions.

Meetings for the 2021-2022 4-H year will start on October 7, 2021.

---

## Kit Check Out for Registered Volunteers

In an effort to make hands-on, quality, educational resources available to your program and club, we are introducing Johnson County 4-H Kits for Registered 4-H Volunteers to borrow. Thank you Johnson County Extension Education Foundation and Google's CS Pathway grant for making this possible! Find information at [www.johnson.k-state.edu/4-h/KitCheckOut.html](http://www.johnson.k-state.edu/4-h/KitCheckOut.html) and contact Ami with any questions.



# County Project Opportunities

## Countywide Knitting Project

Learn the skills to begin knitting, or improve your knitting skills, by being part of the Countywide Knitting Project. Contact Sarah at [skallansrud@yahoo.com](mailto:skallansrud@yahoo.com) to be added to the mailing list for meeting announcements.

## Johnson County 4-H Dog Club Dog Shows

The Johnson County 4-H Dog Club will be hosting two invitational dog shows in 2021. The first invitational show will be on June 12, starting at 8:30 a.m. Pre-registration and 4-H dog show immunization records are due by June 1. Walk-ins will be taken the day of the show at an increased entry fee. There will be an invitational Rally-Obedience and Agility only dog show on July 10 at 8:30 a.m. Pre-registration and 4-H dog show immunization records are due by June 30. An informational flyer for each show is posted on the Johnson County 4-H website at [www.johnson.k-state.edu/4-h/events-programs/livestock.html](http://www.johnson.k-state.edu/4-h/events-programs/livestock.html). For additional information, please call or text Shelley Goebel at 913-634-8688.

## Tail Waggers Invitational 4-H Dog Show

An informational flyer and entry form for the Tail Waggers Invitational 4-H Dog Show is posted at [www.johnson.k-state.edu/4-h/events-programs/countywide-projects.html](http://www.johnson.k-state.edu/4-h/events-programs/countywide-projects.html). The event will be held on Saturday, June 19 at the Johnson County Fairgrounds in Gardner. Pre-registration is due by June 12. Also, walk in entries are welcomed.



## Telescope-Building Workshop

Anyone interested in astronomy is invited to participate in a telescope-making workshop! You will build telescopes from scratch!

**Date:** Saturday, June 26, 2021     **Time:** 10:30-11:45 a.m.

**Location:** Room 1055 at the Johnson County Extension Office

**Seats Available:** Attendance is limited to the first 10 4-H'ers who RSVP due to social distancing as well as available supplies.

**Please bring the following supplies to the workshop:**

- \$10 to cover the cost of the lenses
- 2 paper towel tubes (or 2 wrapping paper tubes cut to ~11" in length) painted black (inside and outside) for each 4-H'er participating in the workshop
  - \*\*If you have 2 different sizes of paper towel tubes or wrapping paper tubes, one that will fit inside of the other, that would work best, or we can slice the edge of one of them, overlap the edges, and glue it so that it will fit inside the other one.\*\*
  - \*\*Please paint the outside AND inside of the paper towel tubes black prior to arriving at the workshop – spray paint works well.\*\*

Please RSVP to Heather Anderson, Astronomy Project Leader, at [handerson3@gmail.com](mailto:handerson3@gmail.com) if you are planning on coming to the program to ensure that enough supplies are available for the meeting. If you have any questions, comments, or suggestions for the Johnson County 4-H Astronomy Project, please let Heather know!

# Local Opportunities

## **Share Your 4-H Projects with a Local Group**

The Harmony Homemakers FCE group will be holding a meeting the afternoon of Thursday, July 1 at the Extension office. Every year at this meeting they invite Johnson County 4-H'ers to share 1-2 of their projects with the group. There are presentation time slots available from 12:45-2:15 p.m. that day. Please sign up at [www.signupgenius.com/go/10C0F4EA8AD28A0F49-4hpresentations](http://www.signupgenius.com/go/10C0F4EA8AD28A0F49-4hpresentations).

---

## **Johnson County 4-H Scholarship**

Every year Johnson County 4-H offers a scholarship to two individuals that are either 4-H seniors or former 4-H members. The scholarship application and guidelines for the 2021 Johnson County 4-H Scholarships are posted on the Johnson County 4-H website at [www.johnson.k-state.edu/4-h/forms-resources/](http://www.johnson.k-state.edu/4-h/forms-resources/), under County/State Opportunities. Applications are due by 5 p.m. on Thursday, July 1, 2021. Please also make sure that any Johnson County 4-H alumni from the past four years who were in 4-H for at least five years are aware of this opportunity.

---

## **Kansas 4-H Project Report Form Resources**

Set goals, practice record keeping, reflect, and compete using Kansas 4-H Project Report Forms. All forms, along with video tutorials, can be found at [www.kansas4-h.org/resources/4-h-library/awards-and-recognition/ProjectRecognition.html](http://www.kansas4-h.org/resources/4-h-library/awards-and-recognition/ProjectRecognition.html). Informational slides from our local training are posted at [www.johnson.k-state.edu/4-h/forms-resources/record-books.html](http://www.johnson.k-state.edu/4-h/forms-resources/record-books.html).

---

# State Opportunities

## **Summer STEAM Virtual Academy**

The College of Education at K-State is offering a summer STEAM Virtual Academy that is open to any current fifth through eighth grader across the country. The academy will be offered Monday through Thursday, June 7-24, from 9 a.m. to noon CDT. The registration fee is \$75 for all three weeks. The topics are Wild, Weird and Wonderful Writing; M.U.S.I.C. (Music Using STEM is Cool); Sports Science; Stop Motion Animation; and Planet Podcast. All classes require each student to have an iPad or digital device. Register online through the link at <https://coe.ksu.edu/collaborations/summer-stem-institute/virtual.html>. Classes will fill up quickly and have limited space, so don't delay signing up!

---

## **Fun with Food Science: Baking**

Do you like to bake (and eat)? This camp is for the curious junior scientist who wants to know the how and why of food science through the world of baking. The crazy science behind food and the way we taste it will be explored. Through zoom interactions with KSU food professionals, participants will learn the secrets of making the perfect pizza and the yummiest desserts. The question "What makes bread taste so good and why does it rise?" will also be answered.

This virtual four-day summer camp offered through K-State's Olathe campus is designed to support STEM-based knowledge in a fun and safe environment. Camps and content are designed for students entering sixth grade through students leaving eighth grade. Fun with Food Science will be held July 12-15, from 9 a.m. to noon. The cost is \$25 and includes a T-shirt. Register online at [olathe.k-state.edu/academics/programs-k12/programs/summer-camps/](http://olathe.k-state.edu/academics/programs-k12/programs/summer-camps/).

# REPORTER'S CORNER

## 2021 County 4-H Horse Club Officers and Future Leaders

**President-Emma, Vice President-Avery, Secretary-Peyton, Treasurer- Payton**

Johnson County 4-H Horse Club is looking forward to a busy spring and summer.

- \* June 2<sup>nd</sup>–6pm Jo. Co. 4-H Horse Club meeting & **Open Arena**- bring horses- Jo. Co. Fairgrounds Arena
- \* June 12<sup>th</sup>–Kansas State Horse Show Circuit – Hosted by Jo. Co. Horse Club @ Jo. Co. Fairgrounds
- \* July 1<sup>st</sup>–North East District Horse Show (Kansas State-Qualifying Horse Show)-Topeka, Kansas
- \* July 7<sup>th</sup>–6pm Jo. Co. 4-H Horse Club meeting & **Open Arena**- bring horses- Jo. Co. Fairgrounds Arena
- \* July 18<sup>th</sup>–Kansas State Horse Show Circuit Reserved Rain out date- Hosted by Jo. Co. Horse Club @ Jo. Co. Fairgrounds

### JOHNSON COUNTY FAIR

July 26<sup>th</sup>–Rodeo Royalty Coronation & Jo. Co. Fair Race Events

July 27<sup>th</sup>–Jo. Co. Fair 4-H Horse Show Performance Events

## Oxford Hustlers Clean Up the Stream

By Victoria Olberding, Oxford Hustlers 4-H Club Reporter

Trash! Trash everywhere! It's time to clean up the stream! Cleaning up is just what the Oxford Hustlers 4-H Club did on Saturday, April 24. Ten members and their families cleaned parts of the Corporate Woods Park. This community service project is one that the Oxford Hustlers try to do every year. Some of the most common items that were found were shoes, a tire, balls, and a lot of plastic. This is a good reminder to recycle and use trash cans! Please do not litter!



## Club Reporters, Your Article Can Be Featured Here!

Attention all club Reporters! Does your club have some exciting news or photos to share? Is there something you think the rest of the county should know that's happening in your club? Then we have an opportunity for you. The *Reporter's Corner* is a section within Clover Clips that features 4-H club Reporters' articles/pictures. We would like to ask you to limit the article to 200 words and it must be submitted to Christin by the Clover Clips submission deadline. Check the 4-H Calendar on the Johnson County 4-H website for each month's submission deadline.

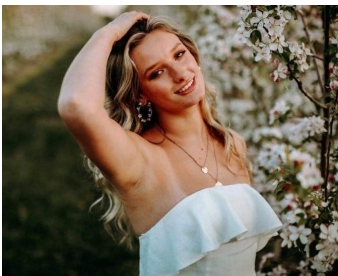
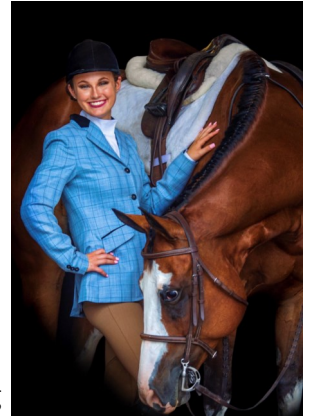
# REPORTER'S CORNER

## 2021 Johnson County Rodeo Royalty Candidates



**Ann'adele**, a 2021 Junior Rodeo Princess Candidate, is a 7<sup>th</sup> grader through KOLP homeschool. She has been riding horses since the age of 7 and has a passion for working with them. (Her horse, Harley, is pictured with her.) She is also an active member in her 4-H club, Country Hearts. And is also involved in the Shooting Sports program as well as the Horse project.

**Avery**, of Johnson County 4-H Horse Club, will be a 2021 Rodeo Queen Candidate. Avery is a 16-year-old equestrian, who enjoys riding and showing her horse Cruz, My Way Downtown and breaking her 2-year-old Cody, Cuz My Heartthrobs. Avery shows in the English and Western events at the local, state, and national level.



**Emma**, also a 2021 Rodeo Queen Candidate, is a senior at Olathe South High School and will be attending K-State to study graphic design this fall. She has been riding for 7 years and spent most of last year breaking her 3-year-old colt. This year she is planning on going to more shows and improving her horsemanship skills. She spends most of her free time riding, playing guitar, and hanging out with friends.

**2021 Johnson County Rodeo Royalty Candidates** will compete in Horsemanship on June 12, and Interview and Presentation on June 16. Combined scores will be calculated. The Johnson County Rodeo Royalty Court will be introduced and announced at the Rodeo Royalty Coronation on July 26 at the Jo. Co. Fairgrounds. Watch for Ann'adele, Avery and Emma throughout the Jo. Co. Fair!

## Stanley Buccaneers' Community Project - "Adopt a School"

By Malachi Chang, Stanley Buccaneers 4-H Club Reporter

Several families within the Stanley Buccaneers 4-H Club celebrated the conclusion of Earth Day Month by participating in a community project. Led by Charlie, the chair of the community project committee, eighteen of us congregated at the California Trail Middle School on May 1st, 2021.

It was a windy and sunny afternoon. After enjoying a picnic style lunch, the 4-Hers and their family surveyed the school campus and could not wait to put their gloves and trash bags to work!

"The track and field is not meant to be a dumping ground!" says Jonah, a fellow 4-H member. With a friendly competition, can-do spirit and use of less than an hour time, the Stanley Buccaneers 4-Hers collected more than 1,000+ pieces of trash. Most of them were plastic water bottles, plastic bags, cardboard boxes, clothing and shards of glass. Looking at the trash that we collected, it is truly satisfying to witness the power of working together as a club and the fact that we did something good for the community. We celebrated our achievement with prizes, popsicles and football/disc golf!

Join us in the comfort of your home to protect our environment: **REDUCE; REUSE; RECYCLE & REMEMBER** to properly dispose your trash when you are out and about!

## June

- 1 - Livestock Grant/Mentor applications due to Extension office
  - JoCo Fair Livestock T-shirt Orders due
- 12 - JoCo 4-H Dog Club Invitational Show, JoCo Fairgrounds
- 15 - YQCA Certification deadline for Johnson County Fair
  - Commercial Heifer, Meat Goat, Market Lamb/ Commercial Ewe and Market Swine/ Commercial Gilt Nominations due to Youth Livestock office
- 19 - Tail Waggers Invitational 4-H Dog Show, JoCo Fairgrounds
- 23 - Pullorum-Typhoid Poultry Testing Site, WyCo Fairgrounds
- 26 - Telescope-building Workshop (pre-registration required)
- 28 - Ambassador Leadership Day Camp registration due

## July

- 1 - Entries for Clothing Construction, Dog Show, Fashion Revue, Fiber Arts and Home Environment due
  - Mr. and Ms. 4-H applications due
  - JoCo 4-H Scholarship applications due
- 5 - Independence Day observed, office closed
- 6 - Ambassador Leadership Day Camp
  - County Council meeting
- 8 - NO Countywide Sewing Group meeting
- 10 - JoCo 4-H Dog Club Rally-O and Agility Show, JoCo Fairgrounds
- 15 - Mr. and Ms. 4-H Presentations and Interviews
- 17 - Clothing Construction and Fashion Revue Judging Informational meeting
- 21 - Entries due for exhibits judged during fair
  - Beef, Goat, Sheep and Swine Stall Requests and Tag Numbers due

Check out [www.johnson.k-state.edu/4-h/forms-resources](http://www.johnson.k-state.edu/4-h/forms-resources) for the 2021 4-H calendar.

**K-STATE**  
Research and Extension

Johnson County

**Cooperative Extension Service Johnson County**  
**K- State Research And Extension**  
**11811 S. Sunset Dr. Suite 1500**  
**Olathe, KS 66061-7057**  
**(913) 715-7000**

Kansas State University is committed to making its services, activities and programs accessible to all participants. If you have special requirements due to a physical, vision or hearing disability, contact the Johnson County Extension Office at (913) 715-7000.

Kansas State University Agricultural Experiment Station and Cooperative Extension Service.

K-State Research and Extension is an equal opportunity provider and employer.

## Contact Us!

**Ami Lin**, 4-H Agent -  
[ami.lin@jocogov.org](mailto:ami.lin@jocogov.org)

**Molly Maddy**, 4-H Program Manager -  
[molly.maddy@jocogov.org](mailto:molly.maddy@jocogov.org)

**Christin Bartels**, 4-H Office Professional -  
[christin.bartels@jocogov.org](mailto:christin.bartels@jocogov.org)

## Follow us on Social Media:

[@jocoks4h](https://www.instagram.com/jocoks4h)

Or click the icon below:



## Clover Clips Submission Deadline

The deadline for submissions for Clover Clips will be on the 15<sup>th</sup> of each month. If that date falls on a weekend or holiday please check the 2021 4-H Calendar at [www.johnson.k-state.edu/4-h/forms-resources](http://www.johnson.k-state.edu/4-h/forms-resources) for the deadline for that month. If you have a submission that you would like to have considered for an edition of Clover Clips please send it to Christin at [christin.bartels@jocogov.org](mailto:christin.bartels@jocogov.org).

# Leader Update

## **4-H Online Enrollment for New Families**

The 4-H Online system has been set up to not allow any changes to 4-H members' projects after May 1. New families can still enroll in 4-H Online. A step by step brochure to help new families enroll is posted on the Johnson County 4-H website at [www.johnson.k-state.edu/4-h/forms-resources/](http://www.johnson.k-state.edu/4-h/forms-resources/). As always, if you have any questions about the 4-H Online system do not hesitate to contact the Johnson County 4-H office.

---

## **Families with Financial Difficulties**

All youth in the community deserve to have the positive youth development experience offered in 4-H. If you have families facing financial challenges, preventing them from participating in a 4-H event, please contact the Extension office for support.

---

## **Project Leaders and Volunteers must be Registered Volunteers**

Adults providing supervision to youth at a 4-H program; making decisions on behalf of the 4-H program; having access to private data of 4-H members or volunteers; and/or handling funds as part of 4-H must complete the volunteer screening process, be accepted, and enrolled as a Kansas 4-H volunteer.

Volunteer applications and renewals are completed through 4-H Online. We asked that all current volunteers complete their renewal by November 1. If a volunteer has not completed the renewal process in 4-H Online for the 2020-2021 year, they should not be volunteering for your club. Once the renewal process has been completed in 4-H Online and their profile is approved they may resume their volunteer duties.

Youth under the age of 18 do not need to complete the volunteer screening process. (There are a few exceptions such as camp counselors.)

If you have any questions please contact the Johnson County 4-H office.

---

## **Resources for 4-H Club Leaders**

### **Club Leader Resource Page**

Please take some time to look over the forms, links and resources available on the Leader Resources page at [www.johnson.k-state.edu/4-h/project-club-resources/club-leader-resources/](http://www.johnson.k-state.edu/4-h/project-club-resources/club-leader-resources/). If you are looking for something and can't find it, do not hesitate to contact the Johnson County 4-H office.

### **4-H EZ: Recipe for Community Club Success**

This training includes six videos, handouts, and resources that go with the videos. Volunteers watch the videos and review the handouts and resources designed to help create a better club experience.

The training is set up so that it can be completed all at once or over time. The videos are available on the North Central Region 4-H Volunteer Development's website at <http://bit.ly/4-HEZ>. Click on the heading of each section to go to the video. First sign in, then you can click on the video link. At the end of each video volunteers are asked to reflect on something learned and offer suggestions for future training opportunities.